



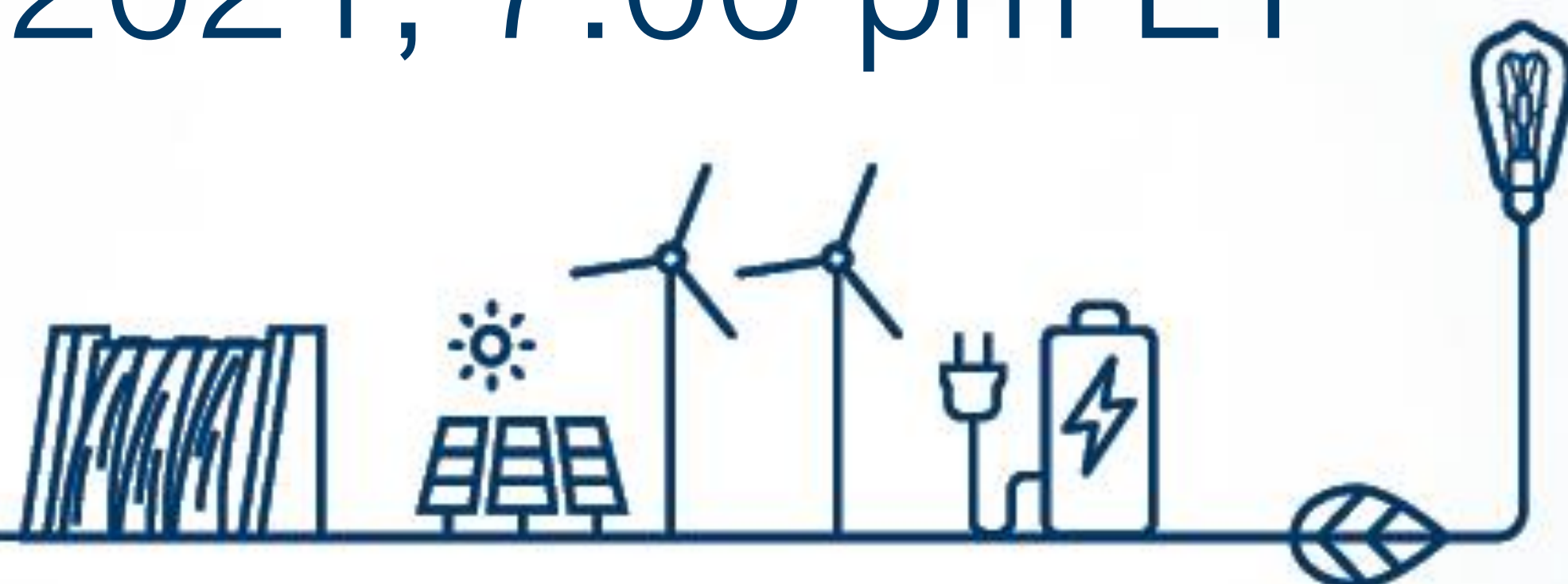
Renewable Energy.
Sustainable Development.



Palomino Solar Energy Project

Public Information Meeting

Monday, June 28, 2021, 7:00 pm ET



AGENDA

- **Welcome and Introductions**
- Housekeeping
- About Innergex and Solar Energy
- About Palomino Solar Energy Project
- Ohio Power Siting Board Certificate Application Process
- Environmental Permitting
- Community Communications
- Community Relations
- Questions and Answers



PUBLIC INFORMATION MEETING PARTICIPANTS



Bill Behling
Director,
Development,
Innergex Renewable
Energy



Janet Grothe
Manager, Community
and Government
Relations, Innergex
Renewable Energy



Matt Butler
Public Information
Officer, Public Utilities
Commission of Ohio



AGENDA

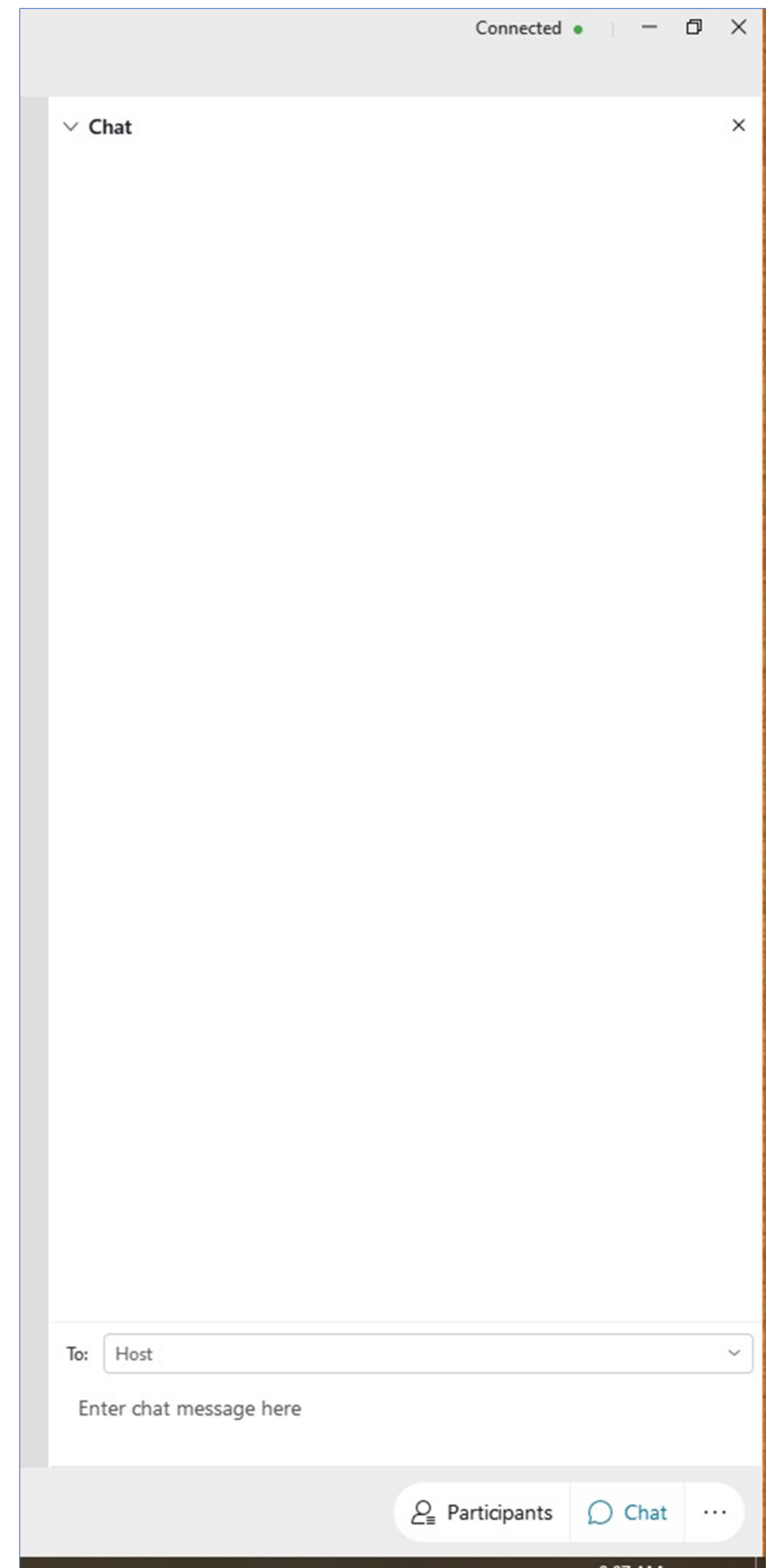
- Welcome and Introductions
- **Housekeeping**
- About Innergex and Solar Energy
- About Palomino Solar Energy Project
- Ohio Power Siting Board Certificate Application Process
- Environmental Permitting
- Community Communications
- Community Relations
- Questions and Answers



FOR REMOTE PARTICIPANTS - IF YOU HAVE A QUESTION

Please send us your questions at any time. At the end of the presentation, during the Q&A session, the moderator will pose the questions to our team members. You can submit your questions by:

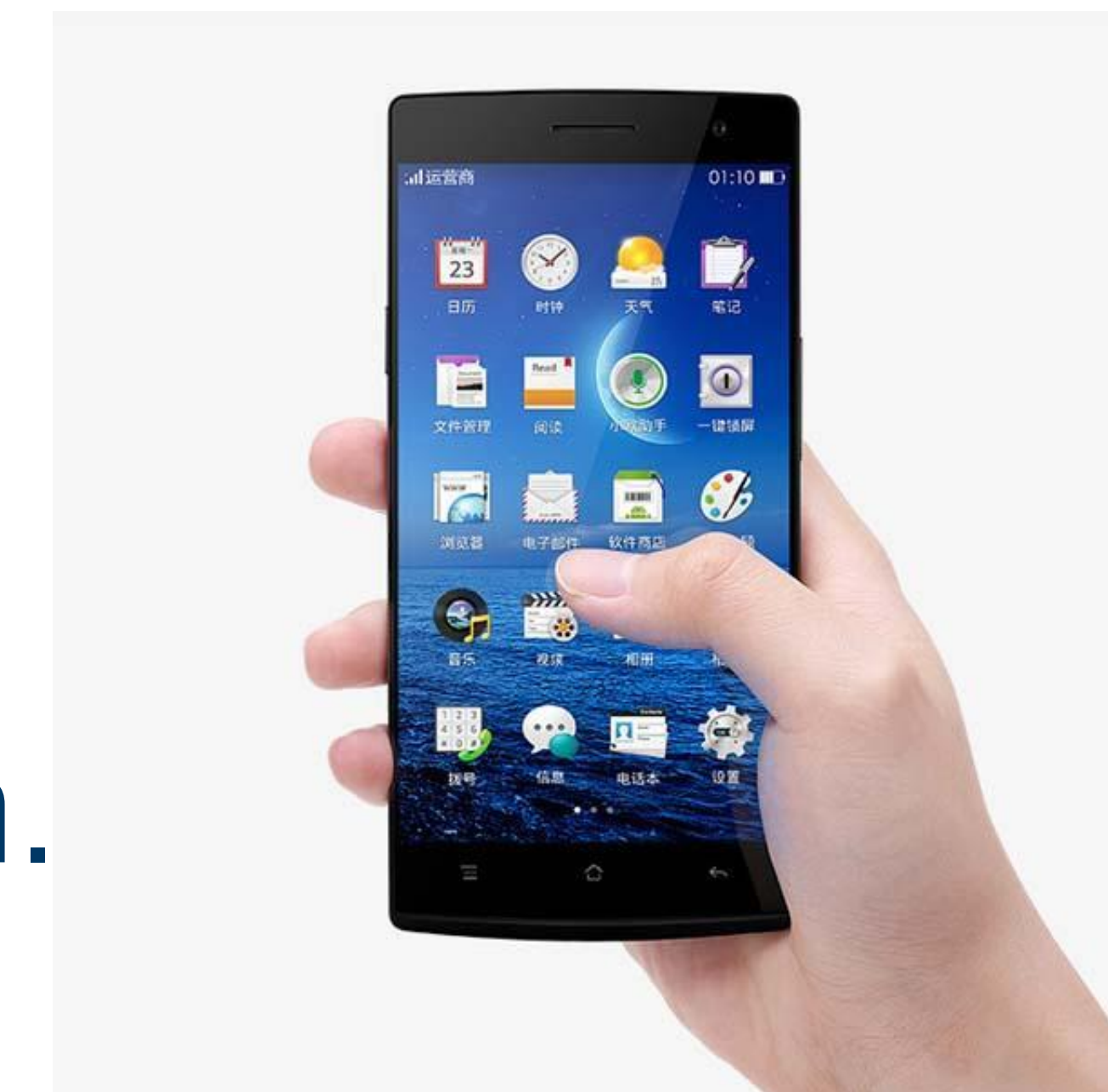
- Writing in the **CHAT Panel** on the right-hand side of your screen. It must be directed to THE HOST or;
- Emailing palomino@innergex.com



FOR TELEPHONE PARTICIPANTS - IF YOU HAVE A QUESTION

- Detailed process to be described at the end of the presentation.

If you have an issue with your telephone connection preventing you from asking a question, please email palomino@innergex.com, and we will do our best to answer it during the Q&A.



AGENDA

- Welcome and Introductions
- Housekeeping
- **About Innergex and Solar Energy**
- About Palomino Solar Energy Project
- Ohio Power Siting Board Certificate Application Process
- Environmental Permitting
- Community Communications
- Community Relations
- Questions and Answers



INNERGEX RENEWABLE ENERGY A GLOBAL LEADER

370
employees

76 facilities
in operation

FRANCE

Gross 324 MW
Net 226 MW

CANADA

Gross 1,954 MW
Net 1,454 MW

UNITED STATES

Gross 1,169 MW
Net 916 MW

CHILE

Gross 254 MW
Net 151 MW

**1,007,462 households
supplied with clean,
renewable energy in
2020**

INNERGEX - A SUSTAINABLE BUSINESS MODEL

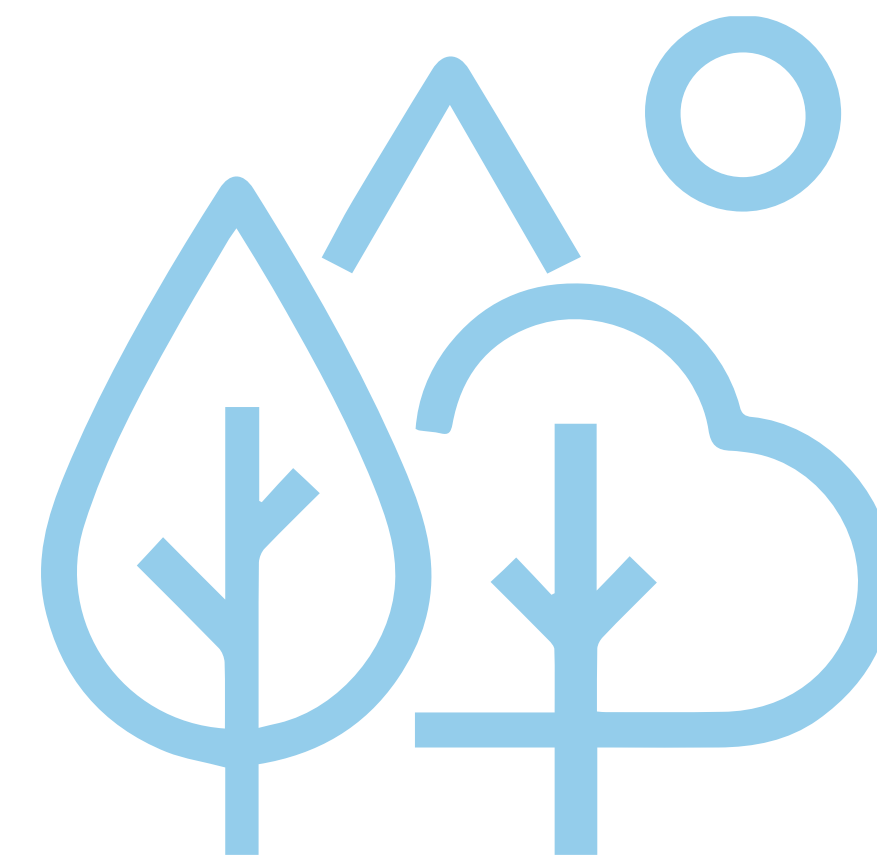
It all starts with **a shared vision.**

Integrating sustainable development into our strategic planning, decision-making process, and daily activities has always been part of our corporate culture.



People

We are a team of passionate individuals who build strong, long-term partnerships with local communities.



Planet

We believe that renewable energy is part of the solution to reducing the impacts of climate change.



Prosperity

We generate value for our employees, our shareholders, our partners and host communities.

WHY SOLAR ENERGY?

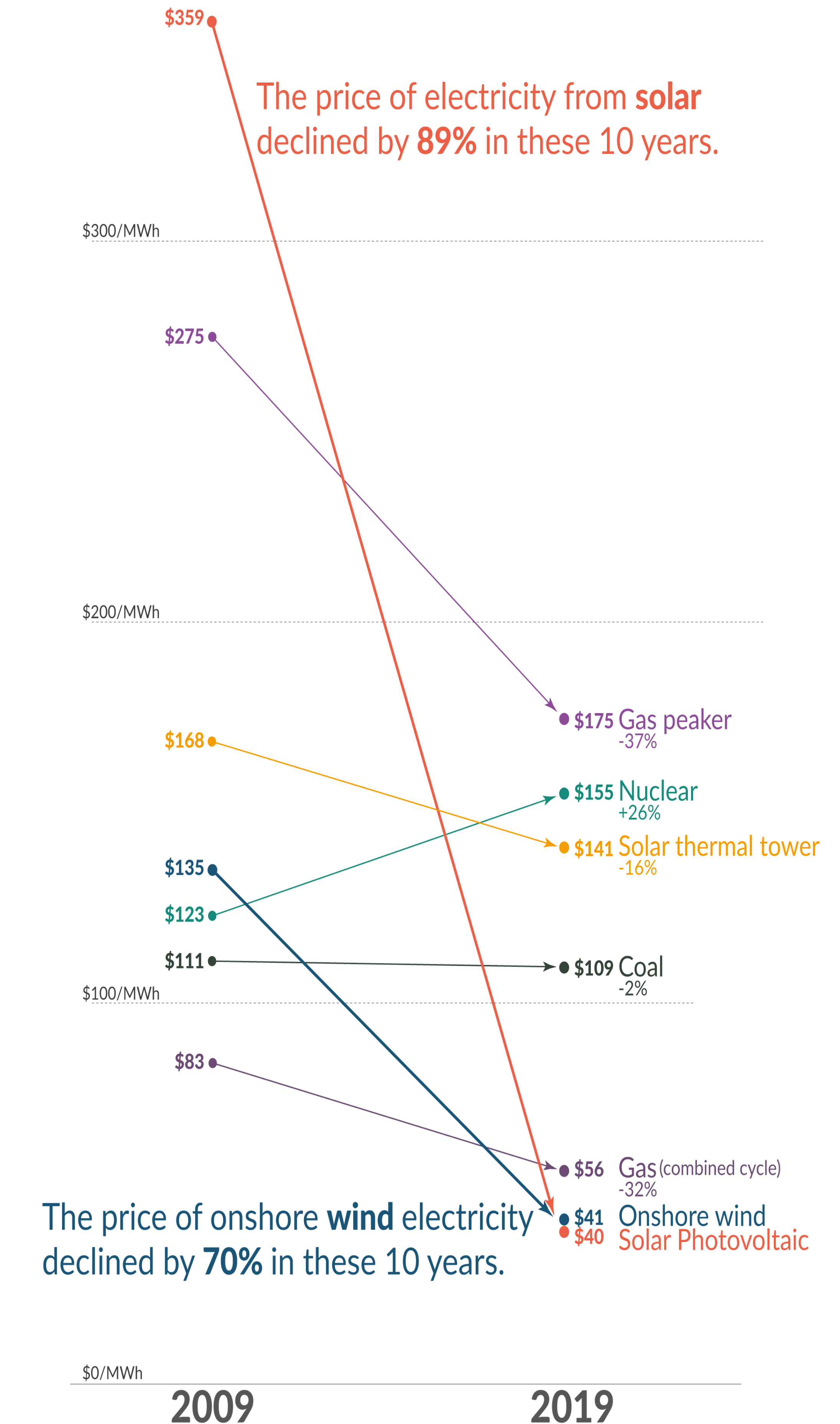
From 2009 to 2019, the price of electricity from solar dropped from \$0.36/kWh to \$0.04/kWh, a decline of 89%.

Solar energy is now the lowest-cost electricity source in the U.S.

The Renewable Energy Buyers Alliance (REBA) was jointly set up by more than 300 companies including Facebook, Google, General Motors and Walmart in March 2019, with the goal of bringing more than 60 GW of renewables online in the US by 2025.

In 2020, REBA found that U.S. corporations once again showcased their resolve and commitment to renewable energy with a record-breaking 10.6 GW of contracted capacity.

The price of electricity from new power plants **Our World in Data**
Electricity prices are expressed in 'levelized costs of energy' (LCOE). LCOE captures the cost of building the power plant itself as well as the ongoing costs for fuel and operating the power plant over its lifetime.



HOW A SOLAR ENERGY PROJECT WORKS

Photovoltaic solar panels collect photons from the sun to generate direct current (DC) electricity.

1

Inverters then convert the 1.5 kV direct current (DC) electricity into 34.5 kV alternating current (AC).

2

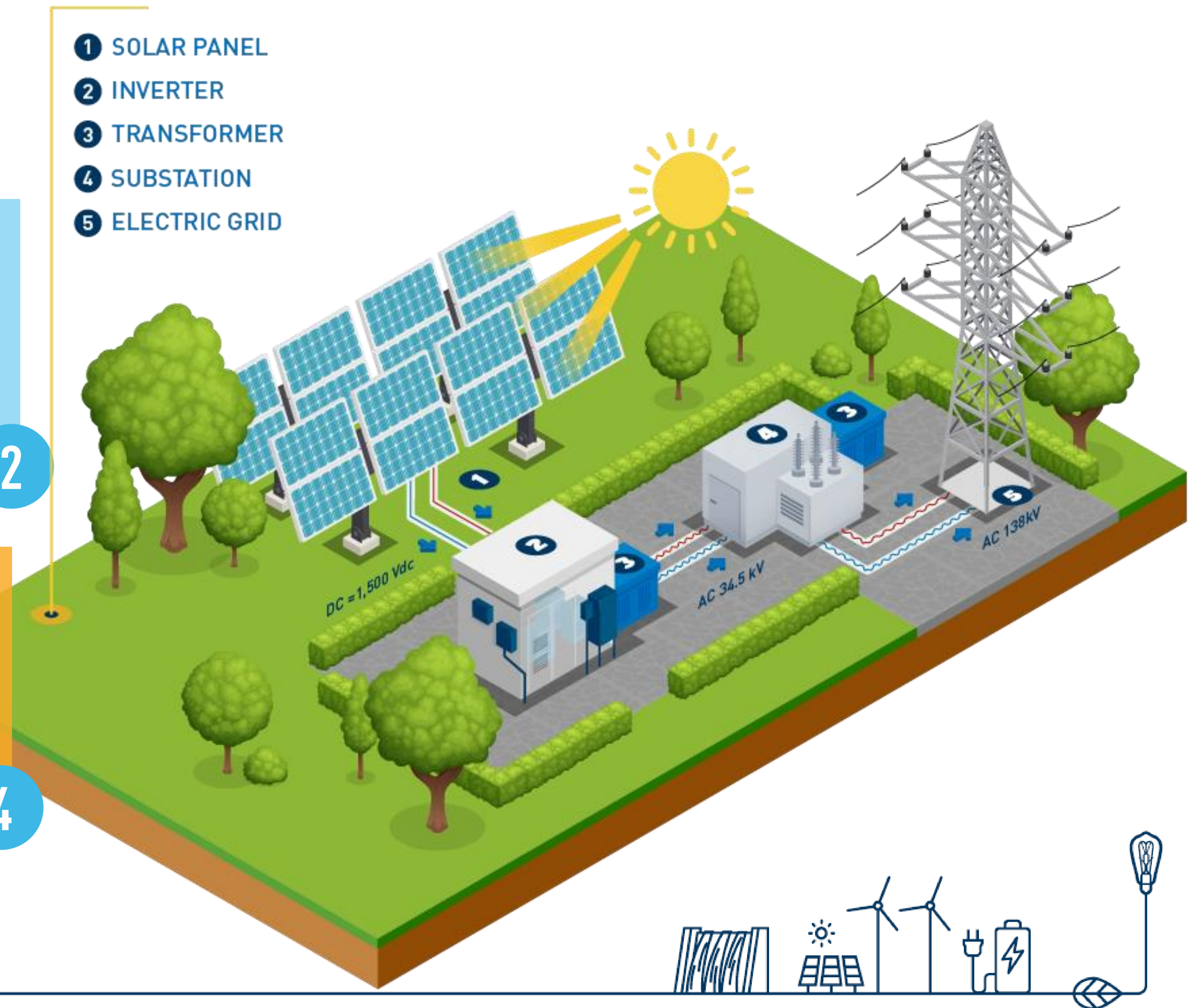
That electricity is harnessed at the substation and converted from 34.5 kV to 138 kV and then metered

3

The electricity is then relayed to the main grid where it is distributed to customers.

4

- 1 SOLAR PANEL
- 2 INVERTER
- 3 TRANSFORMER
- 4 SUBSTATION
- 5 ELECTRIC GRID



AGENDA

- Welcome and Introductions
- Housekeeping
- About Innergex and Solar Energy
- **About Palomino Solar Energy Project**
- Ohio Power Siting Board Certificate Application Process
- Environmental Permitting
- Community Communications
- Community Relations
- Questions and Answers

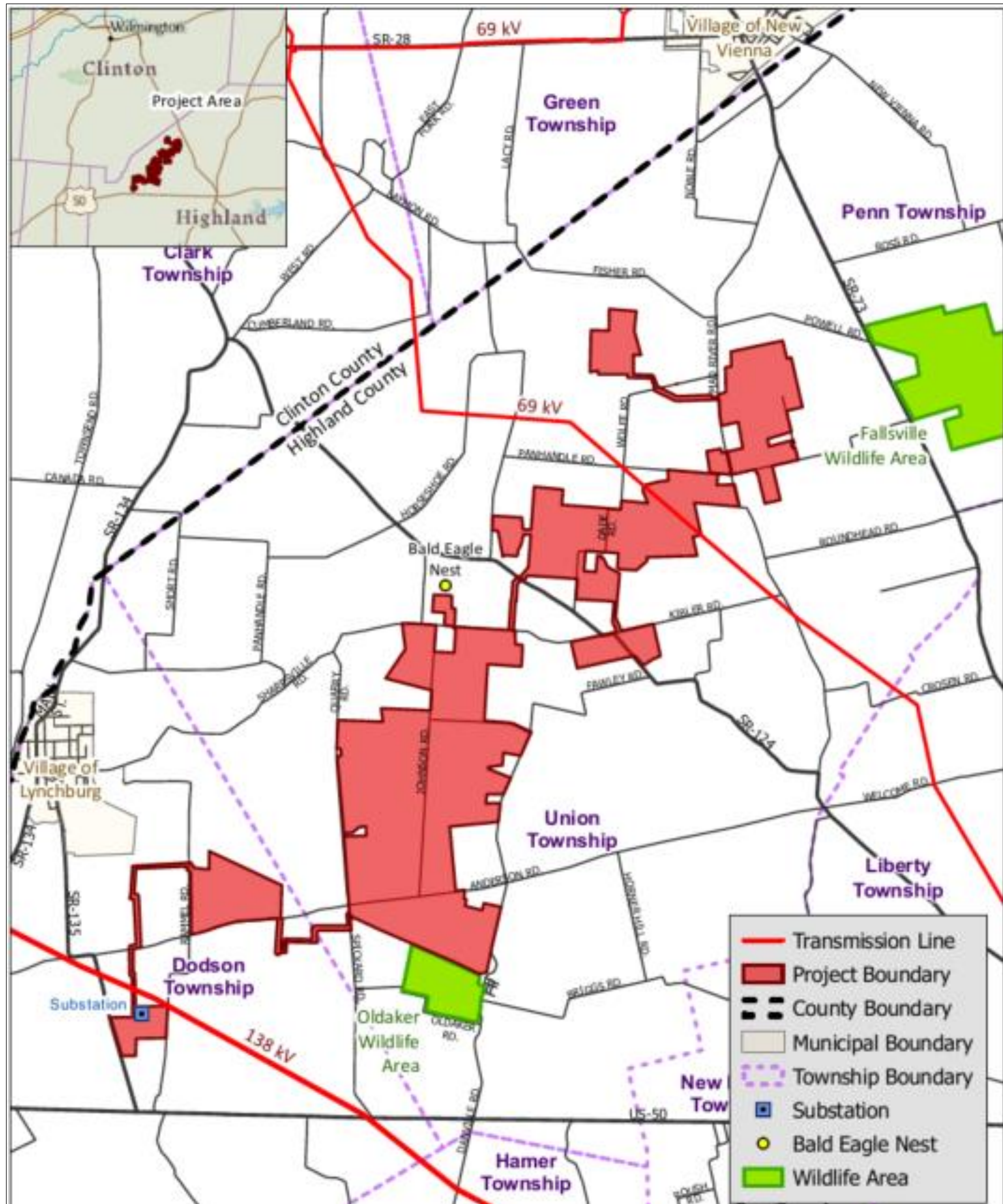


PALOMINO SOLAR ENERGY PROJECT

- 200 MW_{AC} solar PV single-axis tracking system
- Site located in Union and Dodson Townships, Highland County, OH
- Located in an area of low-population density, among Ohio's best solar resources, relatively flat, and with excellent access to available capacity on the regional transmission system
- Utilizes approximately 1,400 of ~3,000 acres
- Project will connect to the existing AEP Hillsboro – Middleboro 138-kV transmission line adjacent to the site
- Will produce enough clean, emission-free electricity to power the equivalent of approximately 39,000 Ohio homes per year
- Provides community with stable, revenues of \$1.8 million per year over an expected 30-year period
- Additional long-term community benefits



PROJECT AREA



AGENDA

- Welcome and Introductions
- Housekeeping
- About Innergex and Solar Energy
- About Palomino Solar Energy Project
- **Ohio Power Siting Board Certificate Application Process**
- Environmental Permitting
- Community Communications
- Community Relations
- Questions and Answers





Power Siting
Board



- Before any company can build a “major utility facility,” the OPSB assures that it benefits Ohio’s citizens, promotes the state’s economic interests, and protects the environment and land use.
- Public and local government participation are strongly encouraged, but decision-making authority rests with the OPSB.
- If approved, the OPSB issues a certificate for the construction, operation, and maintenance of the facility.

Electric Generation

Solar farms 50 MW
and greater

Wind farms 5 MW
and greater

Fossil fuel plants
50 MW and greater

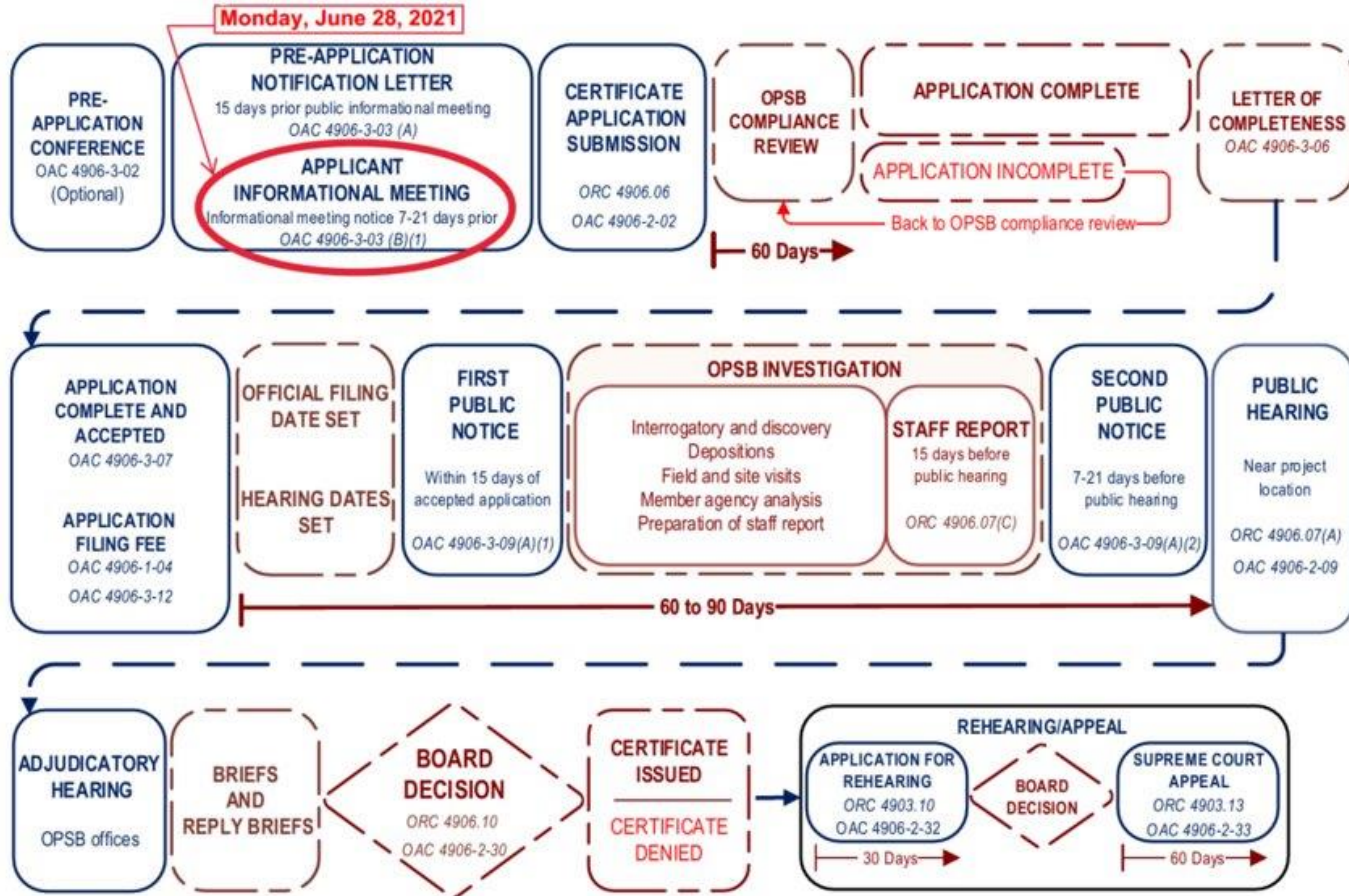
Electric Transmission

Lines and associated
facilities 100 kV and
greater

Natural Gas Transmission

Pipelines greater than
500 feet in length and 9
inches in diameter

Maximum operating
pressure greater than
125 psi



LEGEND



Construction and operation are monitored by the OPSB

Public informational meeting

Developer educates community about project and gathers input to consider in developing its application. OPSB representatives provide info about siting process and public participation.

Public comments

Written comments are filed in the case where they inform the Board members and staff. Comments are accepted at any time after a case number is established.

Online: OPSB.ohio.gov

Email: contactOPSB@puco.ohio.gov

Mail:

Ohio Power Siting Board
180 E. Broad Street
Columbus, Ohio 43215

Local public hearing

Board obtains sworn statements from the public which are transcribed and become part of the official record that the Board considers before making its decision.

Held at least 15 days after staff publishes its report of investigation. Notification letters sent to property owners and local officials. Newspaper notice 7-21 before the hearing.

Adjudicatory hearing

The developer, OPSB staff, and parties to the case present testimony and evidence regarding the facility and cross examine each other. Intervention grants individuals and local governments the right to participate as a party in the adjudicatory hearing, file for rehearing, or appeal to the Supreme Court of Ohio.

Held approximately 2 weeks after the local public hearing. Property owners and local officials receive letters advising them of right to intervene.

- If a project is approved, the OPSB monitors construction and operation to ensure compliance with the certificate and any conditions.
- The developer must notify landowners prior to start of construction.
- The developer must establish a complaint resolution process to address concerns resulting from project construction and operation.
- OPSB can assist individuals who feel they are not obtaining a resolution from the developer.

OPSB Website

OPSB.ohio.gov

- Case summary page
- Process information
- Calendar of events

contactOPSB@puco.ohio.gov
866-270-6772

Docketing information system

dis.puc.state.oh.us

- View case documents and public comments
- Subscribe for case notifications

The Ohio Power Siting Board
180 East Broad Street
Columbus, Ohio 43215

AGENDA

- Welcome and Introductions
- Housekeeping
- About Innergex and Solar Energy
- About Palomino Solar Energy Project
- Ohio Power Siting Board Certificate Application Process
- **Environmental Permitting**
- Community Communications
- Community Relations
- Questions and Answers



OPSB CERTIFICATE APPLICATION

- In light of the COVID-19 pandemic, Palomino Solar requested, and was granted, a waiver from the provisions of OAC 4906-3-03(B) requiring a public informational meeting to be held in person.
- Palomino Solar hosted one web-based public informational meeting on March 9, 2021, and this in-person public informational meeting on June 28, 2021.
- The OPSB Certificate Application will be submitted in compliance with applicable requirements of ORC 4906.06 and OAC 4906-4 [Certificate Applications for Electric Generation Facilities].
- For those who would like to review these sections of the ORC and OAC, copies are provided at the sign-in table.



OPSB CERTIFICATE APPLICATION

TABLE OF CONTENTS

1. PURPOSE AND SCOPE
2. PROJECT SUMMARY AND APPLICANT INFORMATION
3. PROJECT DESCRIPTION AND SCHEDULE
4. PROJECT AREA SELECTION AND SITE DESIGN
5. ELECTRIC GRID INTERCONNECTION
6. ECONOMIC IMPACT AND PUBLIC INTERACTION
7. COMPLIANCE WITH AIR, WATER, SOLID WASTE, AND AVIATION REGULATIONS
8. HEALTH AND SAFETY, LAND USE, AND ECOLOGICAL INFORMATION



PROJECT DEVELOPMENT & CONSTRUCTION SCHEDULE

Q4 2019	First Lease Agreements Signed ✓
Q1 2020	Initial Interconnection Application (50 MW) Submitted ✓
Q2 2020	Commencement of Environmental & Cultural Studies ✓
Q3 2020	Second Interconnection Application (150 MW) Submitted ✓
Q1 2021	Virtual Public Information Meeting ✓
Q2 2021	In-Person Public Information Meeting
Q3 2021	Certificate Application Submitted to OPSB
Q2 2022	Certificate Issued by OPSB
Q2 2022	PJM Generation Interconnection Agreement Executed
Q3 2022	Construction Start
Q4 2023	Commercial Operation Date

**COMMUNITY ENGAGEMENT IS ONGOING
THROUGHOUT THE ENTIRE PROCESS**

AVOIDING, MINIMIZING, AND MITIGATING IMPACTS OPSB CERTIFICATE APPLICATION EXHIBITS LIST

- Manufacturer's Equipment Specifications
- Route Evaluation Study
- PJM Interconnection Studies
- Property Value Impact Study
- Socioeconomic Report
- Complaint Resolution Plan
- Decommissioning Plan
- Noise Assessment
- Preliminary Geotechnical Engineering Report
- Vegetation Management Plan
- Visual Resource Assessment
- Glint and Glare Analysis
- Drain Tile Management Plan
- Cultural Resources Survey Report
- Historic Structure Inventory Report
- Ecological Assessment
- Comments Received at Public Information Meeting



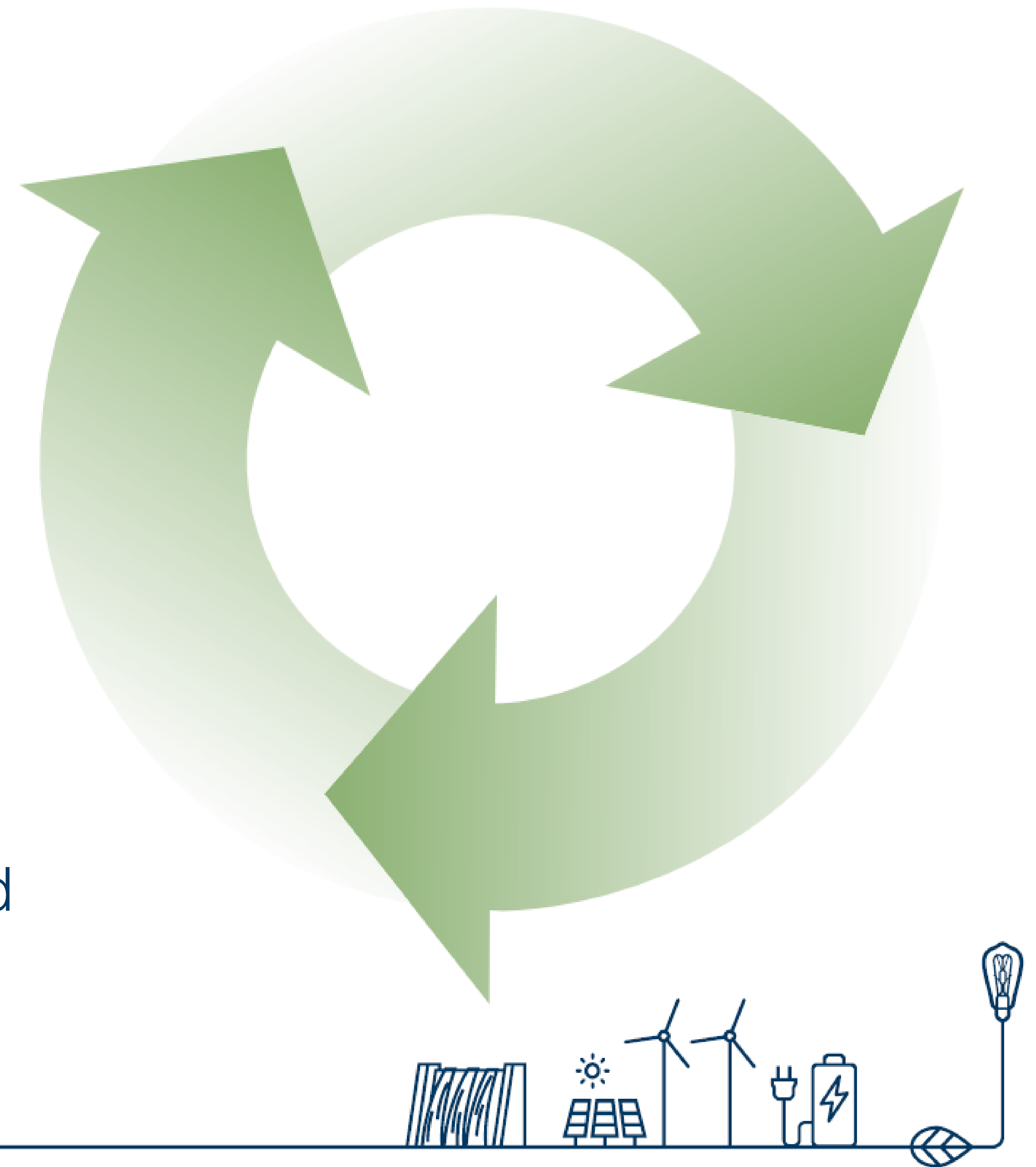
PROPERTY VALUE IMPACT STUDY

- Studies whether there will be an impact to property values as a result of the Project.
- Site-specific analysis addendum report for the Palomino Solar Energy Project will be completed and submitted with the Application.
- Other recent Property Value Impact Studies:
 - University of Texas
 - University of Rhode Island



DECOMMISSIONING PLAN

- Innergex is responsible for the entire Project life cycle, including the costs of decommissioning and recycling of the equipment.
- A decommissioning plan describing how the components and infrastructure will be removed, and how the project area will be returned to the same condition that existed before construction.
- Reuse or recycling will be prioritized over disposal.
- Financial assurance will be obtained by Palomino before construction commences and provided to the State of Ohio.



BALD EAGLES



One Documented Eagle Nest

- NE corner of Sharpsville and Bald Knob Road.
- No other known eagle nests in or near Project Area.

USFWS and ODNR Coordination

- Working with USFWS and ODNR to follow established construction guidelines under Bald and Golden Eagle Protection Act.
- Tree row with nest will not be disturbed.
- No Project work or infrastructure proposed within USFWS and ODNR recommended 660' buffer from the nest.
- Operations will include occasional vehicle traffic, which is less frequent and less noisy than farm activity during planting/harvest.

ROADWAY USE, REPAIR AND MAINTENANCE AGREEMENT

- The Project will be using existing roads and will be developing a transportation plan to describe the anticipated impact on this infrastructure during construction.
- Mitigation measures will be proposed to minimize these potential impacts on the local road system.
- Palomino will be negotiating a Roadway Use, Repair, and Maintenance Agreement with Union Township, Dodson Township, the Highland County Engineer, and the Highland County Commissioners.
- Very little traffic will be generated during operation.



VISUAL RESOURCE ASSESSMENT

□ Visual Resource Assessment and Mitigation Plan

- Assess the visual impacts associated with the Project.
- Evaluate the potential visibility of the Project within the visual study area.
- Create photographic simulations of select areas of proposed Project.
- Describe proposed mitigation measures that would be implemented to reduce/minimize potential visual impacts, including Landscape Plan.

□ Landscape Plan

- Developed to help mitigate visual impacts of the Project from roadways and adjacent land, especially in higher viewership areas.
- Screening intensity will vary based on viewership = 3 Planting Modules.
- Proposes to utilize native landscape material, including pollinator species.



LANDSCAPE PLAN – VISUAL SIMULATIONS*

Planting Module 1



- Low viewership – e.g. local roads (not through roads) and property lines with very low viewing period
- Grasses and/or pollinator forbs (wildflowers) – e.g. little bluestem, prairie dropseed, wild columbine, common milkweed, heath aster

* Simulations of proposed Ohio solar projects and representative of the type and level of vegetation / screening proposed for Palomino.



LANDSCAPE PLAN – VISUAL SIMULATIONS*

Planting Module 2



- Higher viewership – e.g. major/through roads and area with more peripheral and short duration viewing period by higher number of people
- Grasses and/or pollinator forbs (wildflowers)
- Shade trees, smaller ornamental trees, and shrubs
e.g. sassafras Blackhaw Viburnum, American Sycamore



LANDSCAPE PLAN – VISUAL SIMULATIONS*

Planting Module 3



- Highest viewership – e.g. more stationary and longer duration such as a residence located across the street or adjacent to the Facility
- Grasses and/or pollinator forbs (wildflowers)
- Evergreen trees, shade trees, smaller ornamental trees, and shrubs e.g. Eastern Red Cedar, White Oak



AGENDA

- Welcome and Introductions
- Housekeeping
- About Innergex and Solar Energy
- About Palomino Solar Energy Project
- Ohio Power Siting Board Certificate Application Process
- Environmental Permitting
- **Community Communications**
- Community Relations
- Questions and Answers



COMMUNITY COMMUNICATIONS

- March 8, 2021 - Union Township Trustees
- April 12, 2021 - Dodson Township Trustees
- April 13, 2021 - Lynchburg Area Joint Fire and Ambulance District
Board of Directors
- April 19, 2021 - New Vienna Village Council
- Public Notifications
- Newspaper Ads
- Numerous 1:1 Meetings



AGENDA

- Welcome and Introductions
- Housekeeping
- About Innergex and Solar Energy
- About Palomino Solar Energy Project
- Ohio Power Siting Board Certificate Application Process
- Environmental Permitting
- Community Communications
- **Community Relations**
- Questions and Answers



SUSTAINABLE BUSINESS MODEL THAT BALANCES



People

We are a team of passionate individuals who build strong partnerships with local communities.

- It is our company policy to have local components to our projects.
- Opportunities for local employment during construction.
- Local procurement of goods and services where possible during construction (e.g. landscaping companies) and operations (e.g. grounds maintenance).
- Our workers patronize local businesses and use local services during construction.

SUSTAINABLE BUSINESS MODEL THAT BALANCES



Our Planet

We believe that renewable energy is part of the solution to climate change.

- Environmental and social impacts of project are considered and mitigated.
- Solar facilities make no noise, no emissions to air or water, and have minimum visual impact.
- Palomino will provide clean and renewable energy for 30 years.

SUSTAINABLE BUSINESS MODEL THAT BALANCES



Prosperity

We generate value for our employees, shareholders, partners and host communities.

- We invest in the communities where we operate.
- Committed to local economic development through partnerships with local schools, non-profits and civic organizations.
- Our goal is to support local community needs such as education, wellness and the environment.
- Provide tax revenue ($\sim \$1,800,000/\text{year} \times 30 \text{ years} = \sim \$54,000,000$) for local services like schools, police and fire without providing a burden.

INNERGEX IN THE COMMUNITY

Estimate of the division of Palomino PILOT payments based on:
 200 MW at \$7,000/MW (County) and 2,000/MW/year county discretion

		30 Years
East Clinton Local School District	\$446,740	\$13,402,200
Lynchburg-Clay LSD	\$373,240	\$11,197,200
Developmental Disabilities	\$121,380	\$3,641,400
Lynchburg Area Joint Fire & Ambulance District	\$90,090	\$2,702,700
General Fund (Commissioners)	\$80,920	\$2,427,600
Clinton-Highland Fire and Ambulance District	\$78,540	\$2,356,200
Great Oaks JVS	\$75,390	\$2,261,700
Union Township (small portion to Dodson Township)	\$43,540	\$1,306,200
Paint Valley Mental Health District	\$27,930	\$837,900
Health Department	\$27,860	\$835,800
Children's Services	\$25,130	\$753,900
Sabina Library District	<u>\$9,240</u>	<u>\$277,200</u>
	\$1,400,000	\$42,000,000
Discretion of the County Supervisors	<u>\$400,000</u>	<u>\$12,000,000</u>
	\$1,800,000	\$54,000,000

NOTE: Actual organizational amounts may vary based on panel placement;
 however, the total payment is estimated at \$1.8 MM/year

SPONSORSHIPS AND DONATIONS

Part of being a good neighbor means supporting the causes and efforts that have a broader impact in communities.

We are committed to supporting the following sectors:

- Environment and Sustainability
- Community and Culture
- Health and Research
- Sports and Recreation
- Education and Scholarship

We would like to hear from you!

Janet - 614-502-9400 or

jgrothe@innergex.com or palomino@innergex.com



AGENDA

- Welcome and Introductions
- Housekeeping
- About Innergex and Solar Energy
- About Palomino Solar Energy Project
- Ohio Power Siting Board Certificate Application Process
- Environmental Permitting
- Community Communications
- Community Relations
- **Questions and Answers**





Renewable Energy.
Sustainable Development.

Thank you!

Your feedback is important to us.

Please provide us with feedback by submitting your comments, questions or support to palomino@innergex.com

Visit our website: www.palominosolar.com

