

# HALE KUAWEHI SOLAR PROJECT

Innergex is proposing to develop the Hale Kuawehi Solar Project, a 30 MW solar photovoltaic and 120 MWh battery energy storage system project located on Parker Ranch, near Waimea, on the island of Hawai'i. The proposed Project would power about 16,750 Big Island households with clean, renewable energy.

Hale Kuawehi would consist of a solar field with arrays of photovoltaic panels that would be arranged in rows on single-axis tracking foundations. The solar array would charge the battery storage during the day to provide electricity whenever it is needed most, day or night.

The proposed interconnection route would consist of an overhead transmission line that would extend from the Project switchyard approximately 0.7-mile northwest, across Mamalahoa Highway to connect into the Hawaii Electric Light Company transmission line.

The solar field and associated infrastructure would occupy approximately 300-acres.

## THE STATE'S GOAL IS TO BE 100% RENEWABLE ENERGY BY 2045

By 2022, the Hawaiian Electric Companies are seeking to add 390 MW of renewable energy to the State's energy mix through a competitive procurement process. As such, the Hawaiian Electric Company and its subsidiary companies, Maui Electric Company and Hawaii Electric Light Company, launched a request for proposals process in the spring of 2018 for clean, renewable energy projects for Oahu, Maui and Hawai'i Island that would help the state meet its goal of 100% renewable energy by 2045, bringing more stable electricity costs to consumers and reduce its dependency on imported sources of energy.

Innergex submitted the Hale Kuawehi Solar Project into the Hawaii Electric Light Company process and was selected to be in the Final Award Group and is in the process of negotiating a contract.

## COMMUNITY

Innergex has a 28-year history of developing and operating successful and environmentally responsible renewable energy projects around the world. Our core company values include integrity, responsibility, collaboration and transparency.

Innergex believes that communities must benefit from a renewable energy project in their area that go beyond economic benefits such as job opportunities. We have a long history of sponsoring and supporting local associations, legacy projects and community events in the communities

where we operate. We pride ourselves on being good neighbors and strive for excellence. Innergex is committed to building and maintaining long-term relationships for the life of the project and beyond.

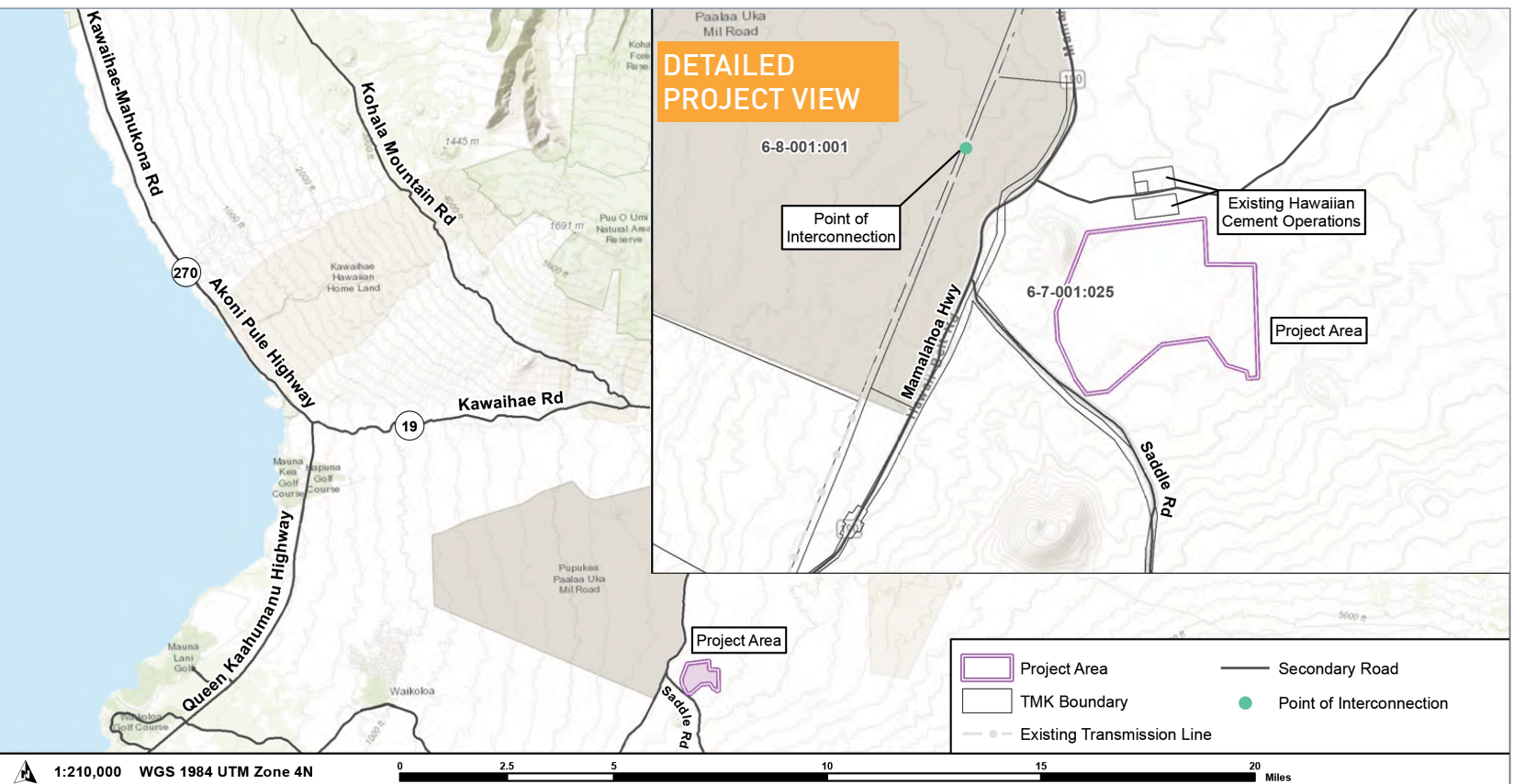
## ARCHAEOLOGICAL, CULTURAL AND ENVIRONMENTAL

Innergex takes its environmental responsibilities very seriously and our facilities are developed and operated with strict adherence to environmental codes and best practices. To date, we have conducted a preliminary archaeological desktop and reconnaissance field survey at the Project area. A Critical Issues Analysis was also completed which describes the existing environmental resources at the Project area and identifies regulatory requirements, issues, constraints, and limitations as they relate to the Project. We have used these preliminary results to site the proposed Project in a location that minimizes environmental impacts. We will be conducting detailed wildlife and site-specific surveys and studies are required to assess potential Project impacts, required mitigation, design limitations, and to refine required permitting criteria.

Conducting archaeological and cultural surveys and environmental and technical studies are crucial to the understanding of a site. Furthermore, early stage meetings with key stakeholders who have information and an interest in the Project area have already started, as well as public meetings to gather feedback on the proposed project. Community engagement efforts will continue throughout the development of the proposed Project. The intention is to arrive at the best possible final layout that balances environmental, technical, economic and social considerations.

Renewable energy projects are subject to County and State regulations.

# PROPOSED SOLAR PROJECT ON PARKER RANCH, HAWAI'I



# PROJECT STAGES

Community engagement is ongoing throughout this process.

## IDENTIFY LOCATION

**SECURE LAND AGREEMENT**  
with local land owner.

1

## ENVIRONMENTAL APPROVALS AND PERMITTING

**UNDERTAKE  
ARCHAEOLOGICAL/  
ENVIRONMENTAL STUDIES**

and permitting process working  
with government agencies.

This is the lengthiest stage and is expected  
to take more than 12 months.

2

## CONTRACT TO SELL POWER

**COMPETITIVE  
BIDDING PROCESS**

overseen by Hawaii Electric Light Company.  
Innergex is participating in the Request for Proposal  
process and has been selected to negotiate a  
Purchase Power Agreement.

3

## CONSTRUCTION

**RELATIVELY QUICK STAGE**

Can be completed in as little as 8 months.

4

## OPERATION

**AN INITIAL  
25-YEAR TIMEFRAME**

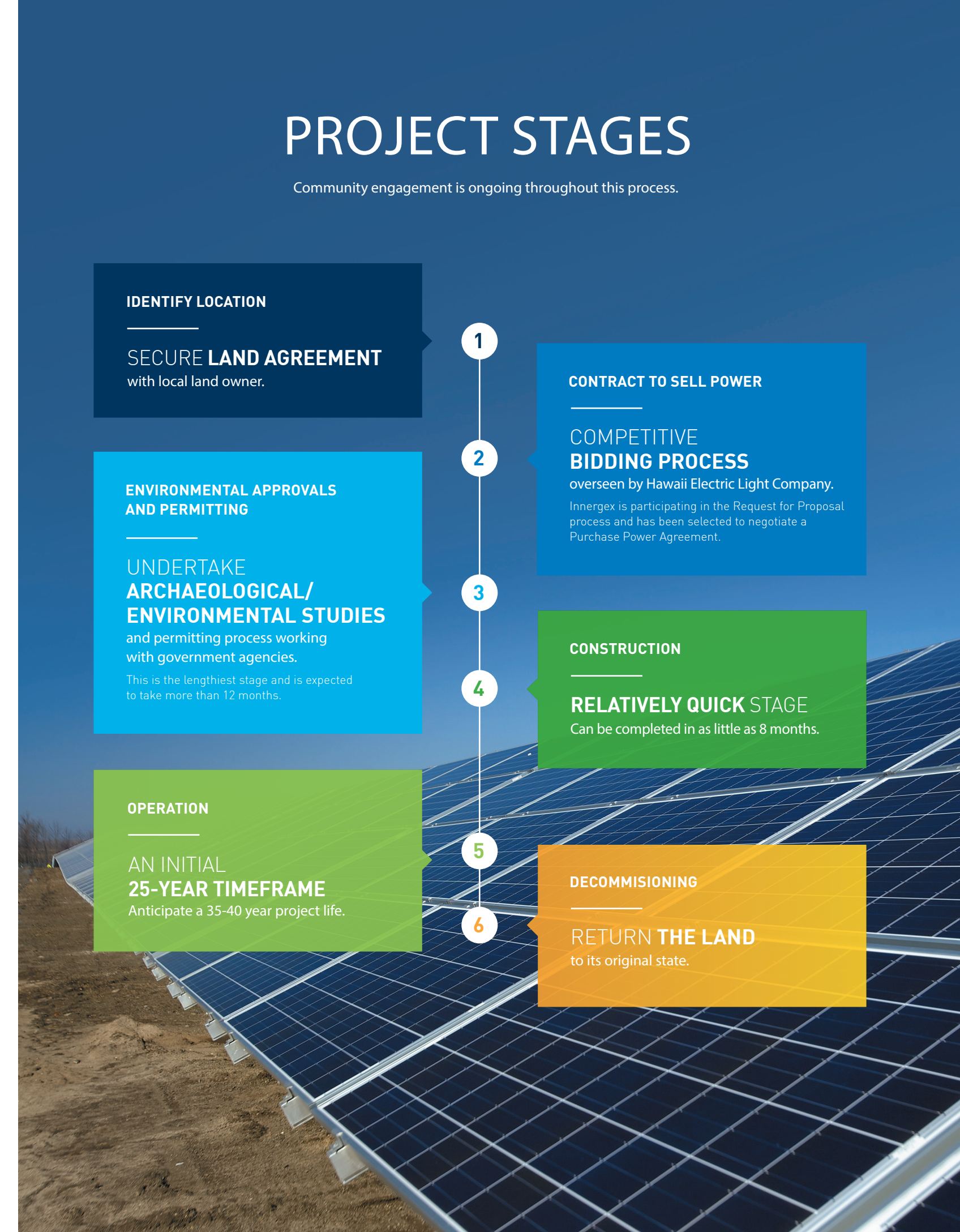
Anticipate a 35-40 year project life.

5

## DECOMMISSIONING

**RETURN THE LAND**  
to its original state.

6

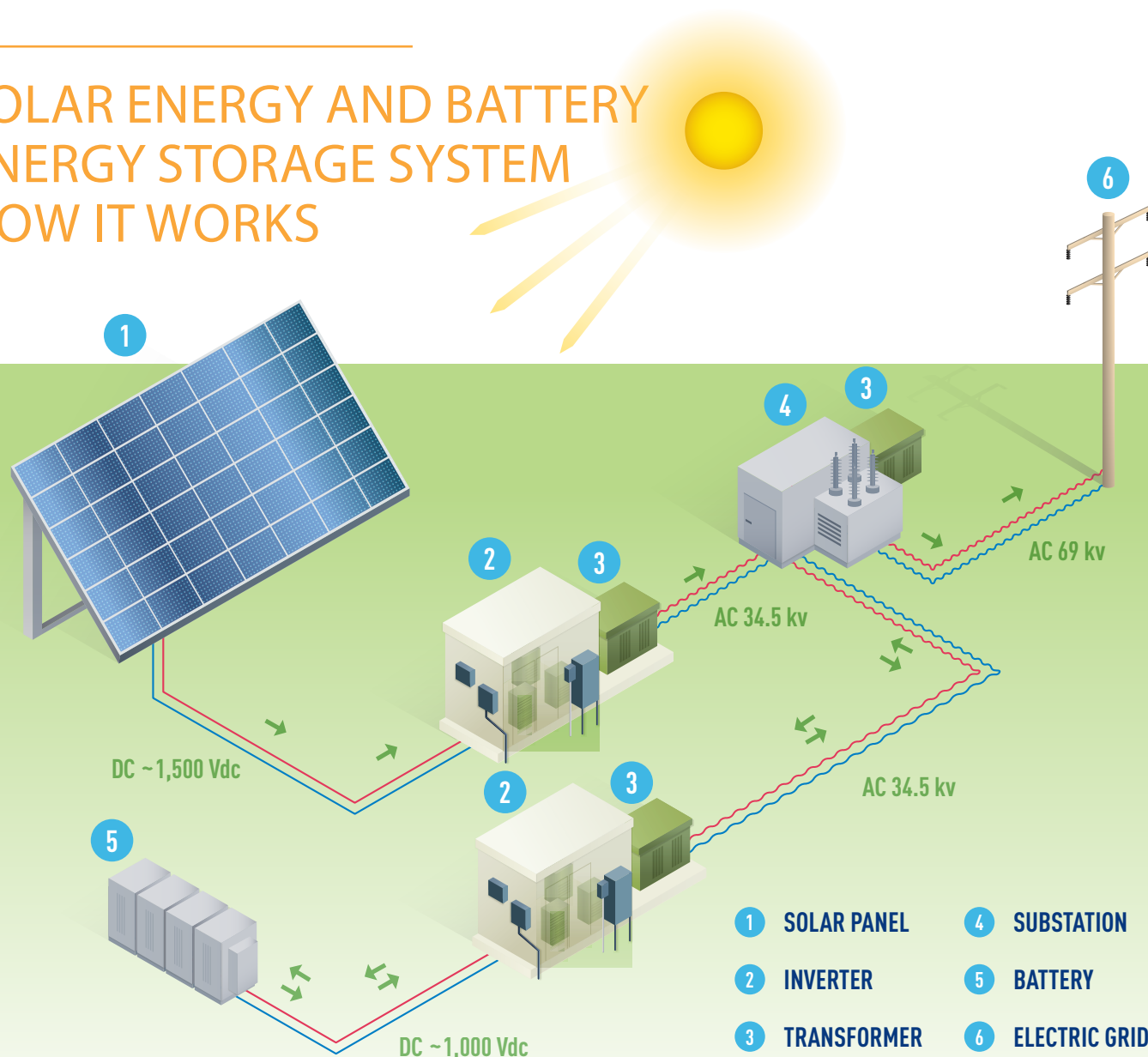


## SOLAR POWER FACTS

Solar energy is the conversion of sunlight into usable energy forms. The sun's rays transmit light energy, in the form of photons, which can be converted to electricity using certain materials that naturally release electrons when exposed to light. Solar energy is the cleanest, most abundant renewable energy source available.

More information on solar energy is available at Innergex ([innnergex.com](http://innnergex.com)), the Solar Energy Industries Association ([seia.org](http://seia.org)) and the International Energy Agency ([iea.org](http://iea.org)).

# SOLAR ENERGY AND BATTERY ENERGY STORAGE SYSTEM HOW IT WORKS



## ABOUT INNERGEX

Innergex develops, acquires, owns and operates hydroelectric facilities, wind farms, solar farms and geothermal power generation plants. As a global player in the renewable energy sector, Innergex conducts operations in Canada, the United States, France, Chile and Iceland. Innergex manages a large portfolio of assets and aims to increase its production of renewable energy by sustainably developing and operating high quality facilities while respecting the environment and balancing the best interests of our host communities, our partners and our investors.

## FOR FURTHER INFORMATION

Julia Mancinelli, Manager – Environment  
604 633-9990, extension 2231  
[hawaiiisolar@innnergex.com](mailto:hawaiiisolar@innnergex.com)

[innnergex.com](http://innnergex.com)